

# On The Disk...

*A run-down of what's included on the free disk with this issue*

*Collated and tested by Mike Orriss*

**S**ubscribers to The Delphi Magazine receive a free disk with each copy, packed with goodies. This includes the source code and example files for all the articles in the current issue.

But, there's much more too! We've sifted through a great many tools, components and other Delphi add-ons to bring you some of the best shareware and freeware material available, as outlined below. The headings are the directory names where you will find the files on the floppy disk.

## ➤ FLOATBAR

This is a free example project by John Newlin that demonstrates various concepts relating to floating, docking toolbars (see the screenshot on the cover).

## ➤ HLI

HighLightIt is a smart tool that links into the Windows 95 TaskBar and helps document your source code by looking for normal text on the clipboard and converting it to RTF format before pasting it back onto the clipboard complete with bold keywords and italic comments. This can then be pasted into your favourite word processing application as formatted source code. Currently support includes Pascal/Delphi, C/C++, Java, Basic and Delphi Forms. From Stefan Boether at Fabula Software. This is a demo version.

## ➤ INTERNET

Listing of Delphi related World Wide Web and ftp sites.

## ➤ MARQUEE

This directory contains fully operational 16- and 32-bit copies of the TMarquisLights component. The screen shot does not do the component justice as the lights appear to rotate (even at design time).

## ➤ PASCAL

How to obtain back issues of The Pascal Magazine: details of the contents of each issue and an order form as an Adobe Acrobat file.

## ➤ RUBICON

Rubicon for Delphi (16- and 32-bit) is a set of components which support word indexing and searching of database tables. For my testing, I used my DTopics database and the results (as can be seen from the screen shots) were very good. You do need to persevere if you are trying the supplied demo though, this feels a bit flaky with error messages coming up before files are created for the first time, etc. From Tamarack Associates.

## ➤ USERGPS

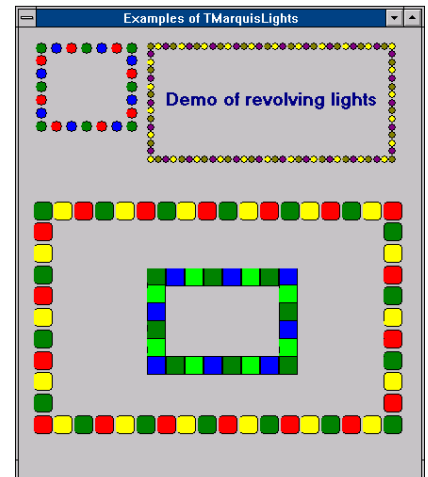
Details of Delphi User Groups.

## ➤ WPTOOLS

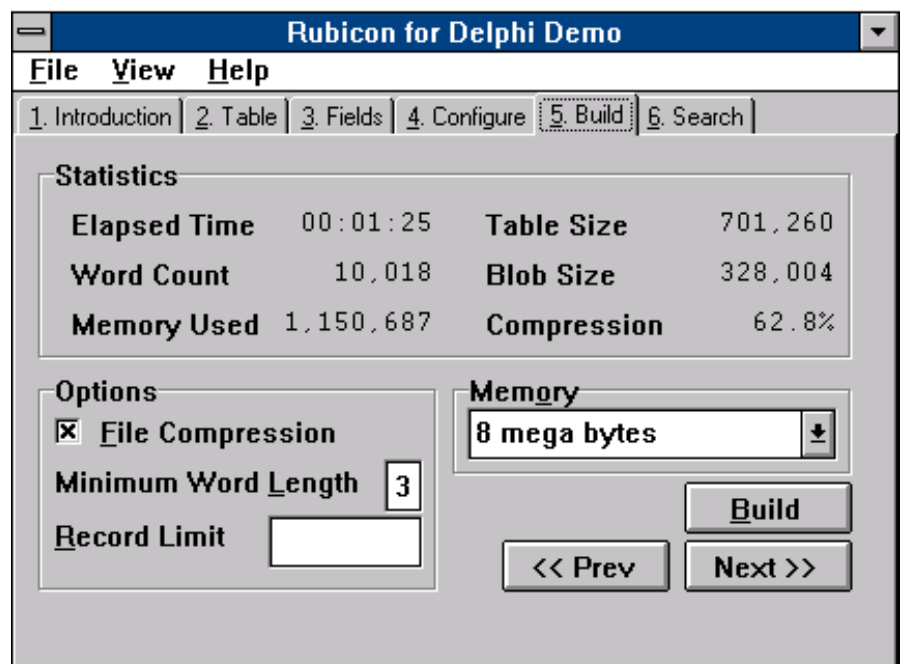
Issue 6 (February 1996) included an early version of Julian Ziersch's rich text controls as 'work in

progress'. It's come a long way since then and the version on this month's disk is 1.7. Full Delphi 1 and Delphi 2 support is provided. TWPRichText allows you to edit formatted text of almost any length. For graphics, simply insert

➤ *The TMarquisLights component in action: to get the full effect you need to try it yourself!*

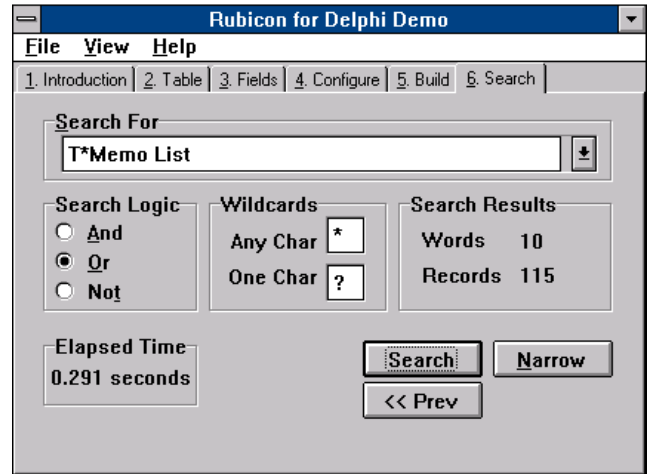


➤ *Below and opposite page: Rubicon for Delphi demonstration program showing the capabilities of this database search tool*



Word	WordCount	BlobSize	BlobData
WRAPPERS	3	28	(Blob)
WRAPPING	1	24	(Blob)
WRAPS	6	41	(Blob)
WRITE	89	109	(Blob)
WRITEABLE	2	24	(Blob)
WRITEBUFFER	6	46	(Blob)
WRITECOMPONENT	7	46	(Blob)
WRITECOMPONENTRESI	1	24	(Blob)
WRITECOMPONENTS	1	24	(Blob)
WRITEINTEGER	3	28	(Blob)
WRITEL	1	24	(Blob)

a bitmap or metafile. When designing your program you can input text with various formats. Also supported are alignment, paragraph spacing, borders, font selection, colors, etc. You can easily add mailmerge: put some insert points into the RTF text and fill in the data in an event handler. It is possible to merge Memo fields, because carriage returns are translated into new lines. Tables are now supported: a cell can contain a paragraph of up to 50 lines. TDBWPRichText is a data-aware version. TWPRichTextLabel displays formatted text which cannot be scrolled or edited, but the text can be made transparent. TWPRtfStorage stores formatted text (usually during designing) and assigns it to any visual RTF component if desired. TWPToolBar controls one or more TWPRichText or TDBWPRichText components. See the screenshot on the cover for a preview.



### Important Note!

Always, but **always** make a backup copy of your COMPLIB.DCL file (located in directory delphi\bin) *before* you take the plunge and install *any* new component into Delphi! Sometimes component installation can trash your COMPLIB.DCL and you will then be left with an inoperative Delphi will have to re-add *all* your favourite extra components. You have been warned!

### Send In Your Code...

If you have some carefully crafted routines, why not send them in by mail or (zipped up) by CompuServe email (to 70630,717) marked for the attention of the Editor. We do consider *all* submitted files for use on future disks.